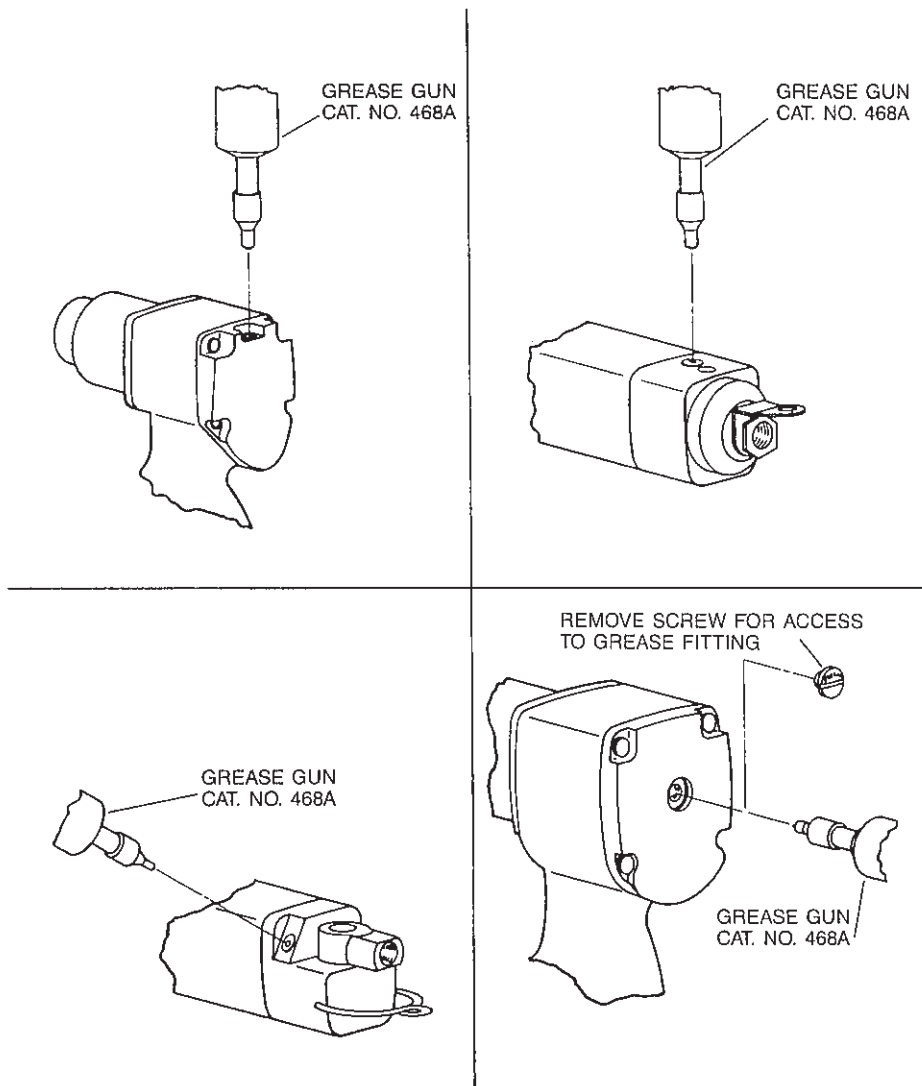




## GREASE INSTRUCTIONS FOR SIOUX IMPACT WRENCHES



The impact mechanism of Sioux Impact Wrenches may be greased thru the grease fitting located at the rear of the tool. Two or three shots of Cat. No. 289 grease every 40 hours is required. See Instructions packed with each tool.



# SIOUX TOOLS INC.

2901 FLOYD BOULEVARD ■ SIOUX CITY, IOWA 51102 ■